

# REINMEER

www.reinmeer.com



## Inline Conductivity Meter **RM-PTCond**

[Data sheet](#)

Support Modbus RTU RS485 protocol in order to communicate with **central controllers such as PLCs**

# Inline Conductivity Meter

## MODEL RM-PTCond

**REINMEER**

Data sheet Model RM-PTCond

### Application Areas

Water & Salt Water Networks  
Food Production & Transfer Lines  
Alcohol & Beverage Measurement  
Chemical Fluids & Solvents  
Fuel Transfer & Consumption Monitoring  
Industrial Automation Integration (PLC/SCADA)

### Features

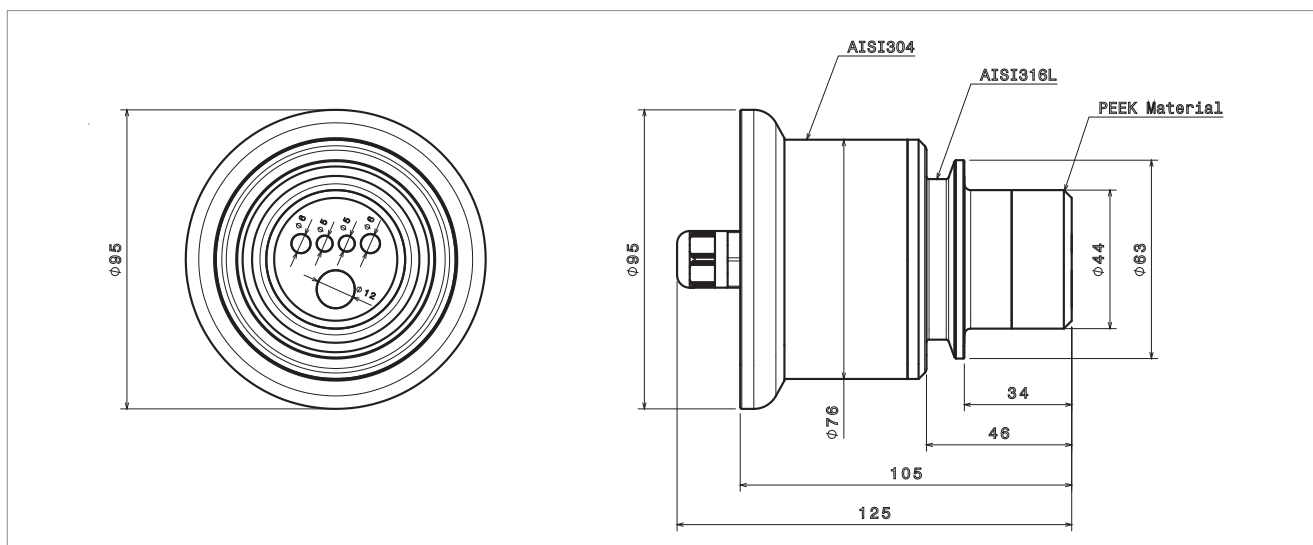
- Fast, accurate and reliable measurement
- Support Modbus RTU RS485 protocol in order to communicate with central controllers such as PLCs
- It can be used in Clear-In-Place (CIP) processes to control the amount of Acidity and alkalinity
- Robustness against environmental electrical and mechanical noises
- It can be used in almost all industrial solutions
- It can be installed on both pipes and tanks
- Support customization according to the user requirements
- One year guarantee and ten years after sale services

### Description

PTCond is a uniquely designed industrial-grade inline conductivity sensor that offers greatly improved range, accuracy and stability with anti-interference capabilities. A built-in transmitter supports digital signal communication using Modbus RTU RS485 protocol, designed to simplify on-site installation, calibration and operation. PTCond contains four electrodes allowing the sensor to be less prone to fouling and deposition. This sensor maintains conductivity accuracy and precision – without the need of frequent calibrations – within a 1.5%  $\mu\text{S}/\text{cm}$ .



### Diameters



### Transmitter Specifications

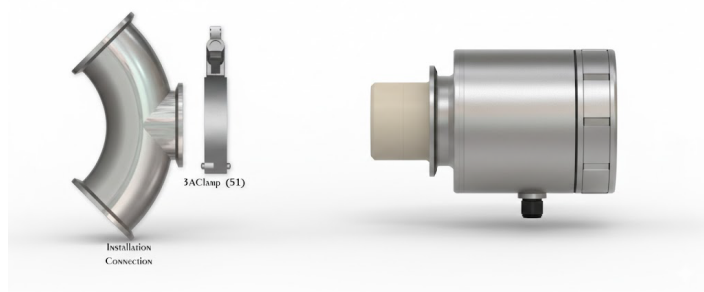
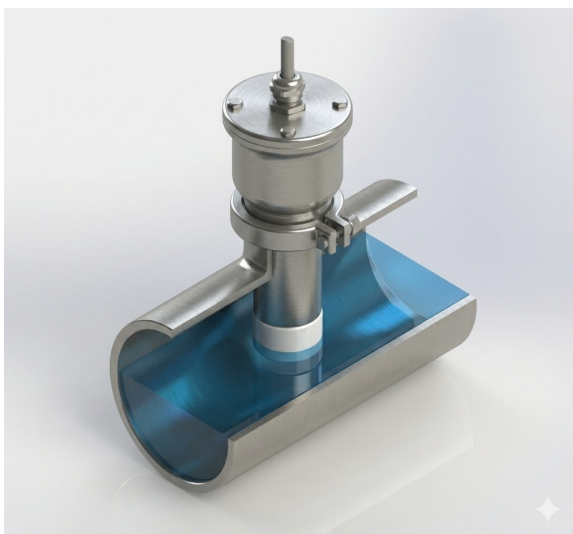
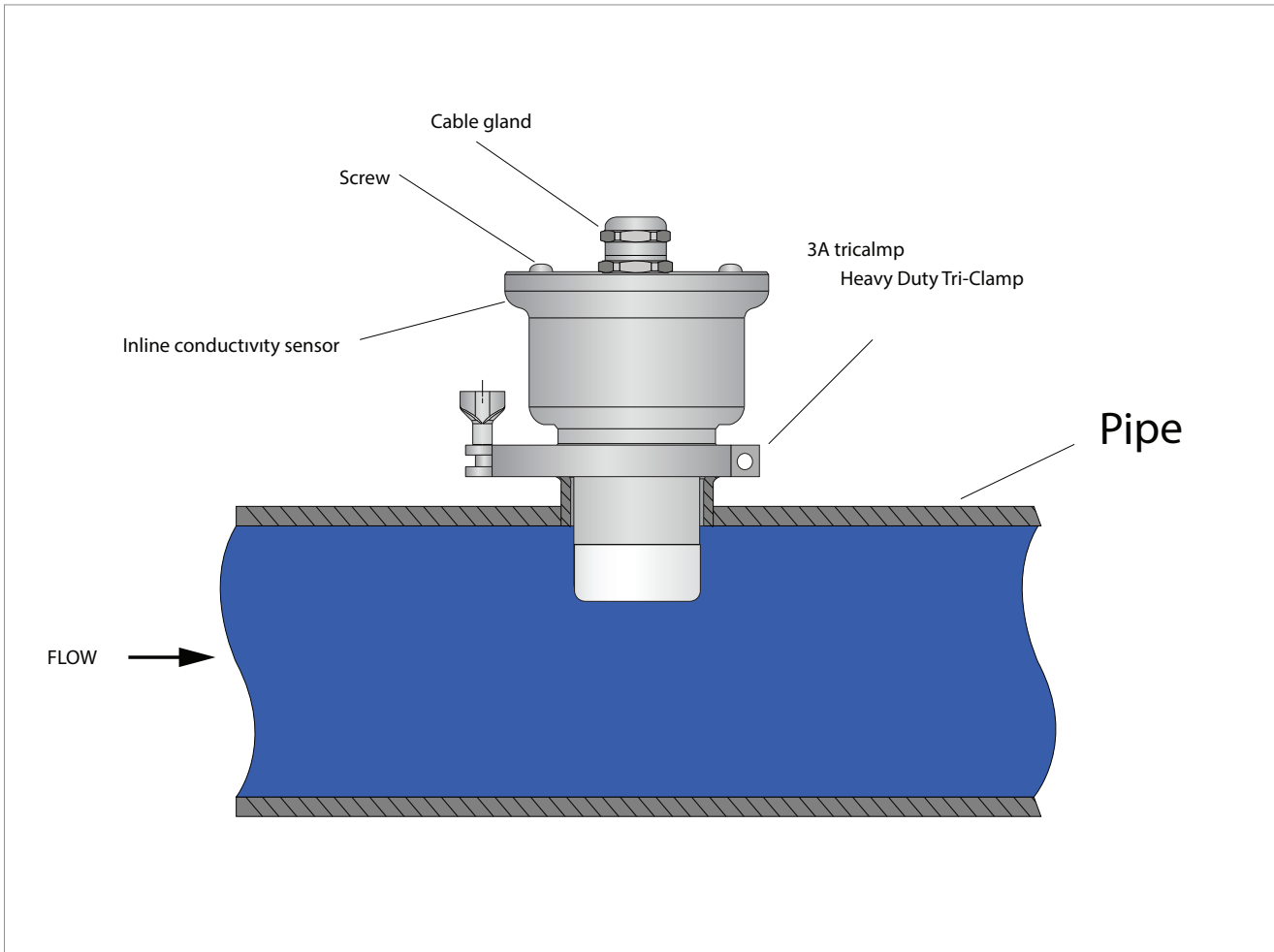
<b>Maximum Process Temperature</b>	130°C
<b>Mounting Connection</b>	3A Clamp, Flange, Nut, ...
<b>Protection Enclosure</b>	IP67 protection class
<b>Electrode Material</b>	Titanium
<b>Housing Material</b>	AISI 304 Stainless Steel
<b>Head Material</b>	AISI 316L Stainless Steel / Glass-filled Peek
<b>Power</b>	22~26 Vdc / 100-240 Vac, 500mA
<b>Display/Transmitter Models</b>	128*64 Pixel LCD STN Screen/With Display, HMI/Without Display
<b>Conductivity Range</b>	0 ~ 500 mS/cm
<b>Measurement Units</b>	mS/m, mS/cm, µS/m, µS/cm, S/m, S/cm
<b>Accuracy</b>	±0.3% Full Scale
<b>Analog Outputs</b>	Two units 0/4 ~ 20mA programmable (max. 1Kohm)
<b>Digital Outputs</b>	Two units programmable
<b>Digital Inputs</b>	Two units programmable
<b>Serial Output</b>	One Modbus RTU RS485
<b>USB Port</b>	Available on HMI Display Model
<b>Data Logger</b>	10000 samples on HMI display model (EC and temperature)

# Inline Conductivity Meter MODEL RM-PTCond

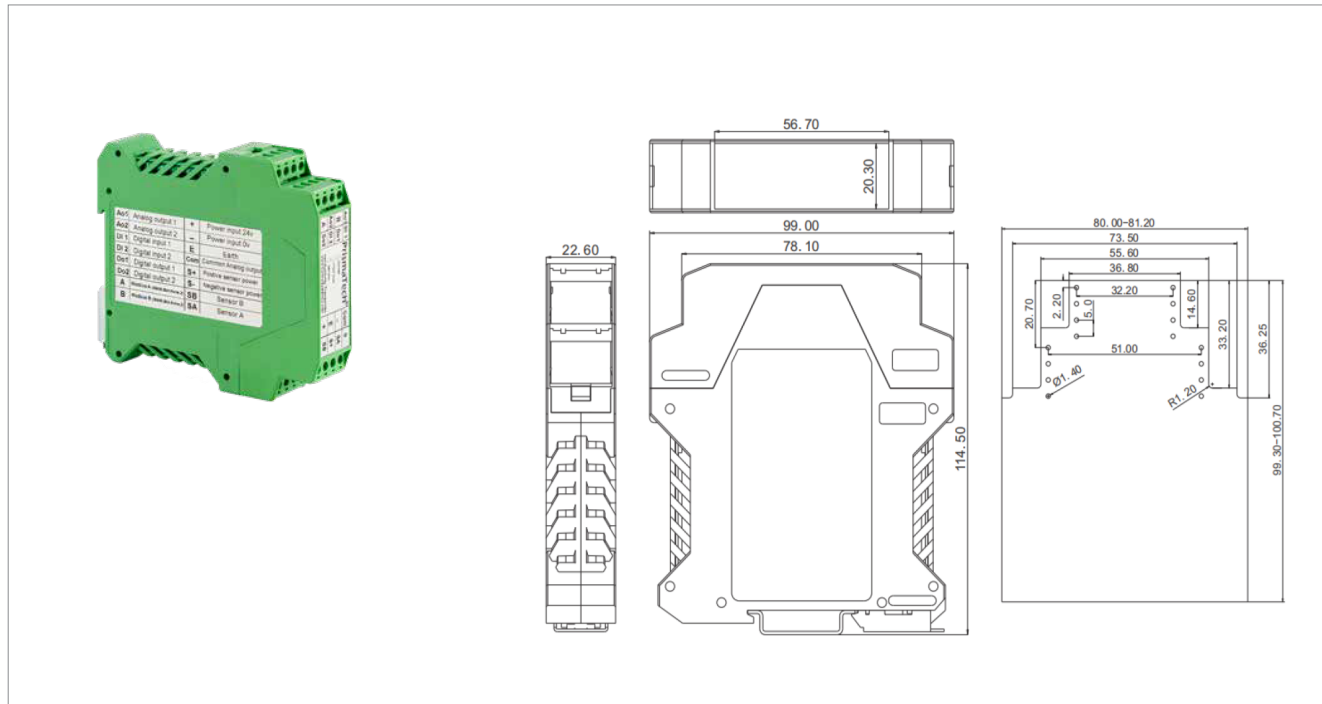
**REINMEER**

Data sheet Model RM-PTCond

## Structure



### Transmitter dimensions



### Transmitter dimensions

