

# REINMEER

www.reinmeer.com



## RM-R800WE FMCW SERIES RADAR LEVEL TRANSMITTER

[Data sheet](#)

4-20mA / RS485 / Bluetooth / HART

# Radar Level Transmitter

## RM-R800WE

**REINMEER**

Data sheet Model RM-R800WE

### Application Areas

Water and Wastewater Management  
Environmental Monitoring & Hydrology  
Civil Infrastructure & Municipal Services  
Agriculture  
Open Channels  
Rainwater Basins  
Dams and Reservoirs  
Simple Industrial Liquid Storage

### Features

- Measured Product: Liquids
- Measurement Range Options: 15 m
- Process Connection: G Threaded or Flange
- Cable Entry: M12 x 1.5 (F)
- Electronics / Output: Two-wire 4...20mA, MODBUS, or Wireless Bluetooth  
Four wire 4-20mA or RS485 (select one of)

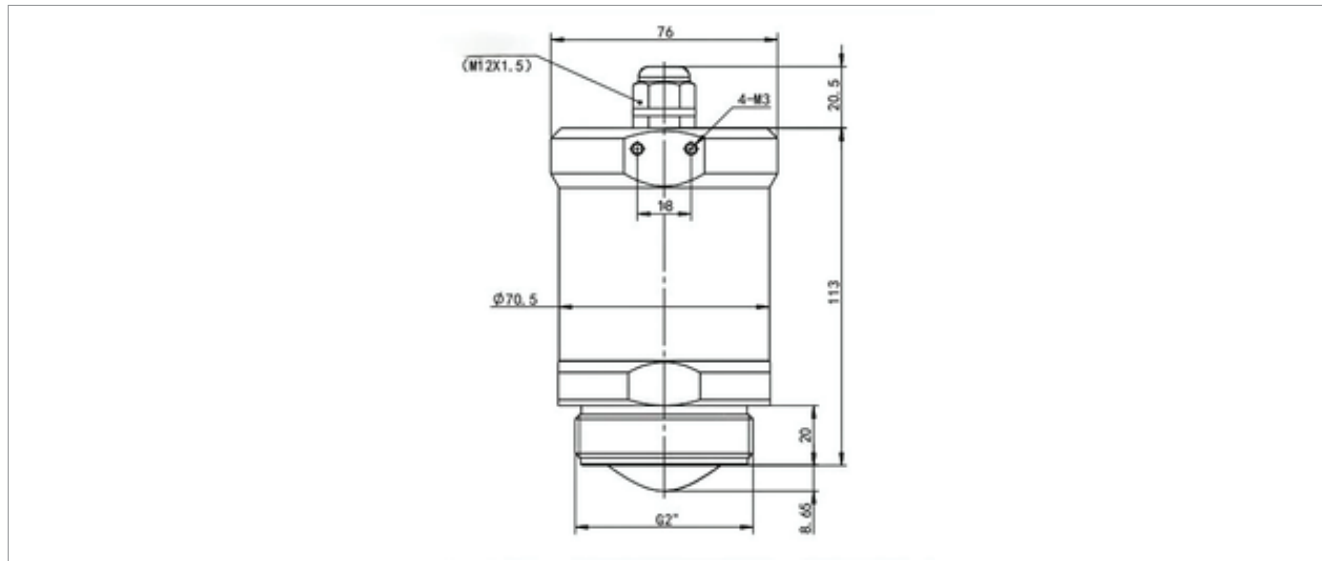
### Description

The SK-R800WE is a high-performance FMCW radar level transmitter engineered for precise, non-contact level measurement in various industrial and environmental settings. Operating within the 77GHz-81GHz frequency range, this sensor delivers an exceptional accuracy of 2mm for liquids and offers a flexible measurement range of up to 30 meters. Constructed with a durable stainless steel body and rated with IP68 protection, it is designed to withstand demanding conditions while maintaining a compact size of 74mm x 97mm.

This versatile transmitter is particularly ideal for open channel applications, such as wastewater management, rain basins, and dam level monitoring, but is also highly effective for use in liquid tanks and containers. It supports a wide array of communication protocols, including 4-20mA, RS485 Modbus, HART, and Bluetooth, allowing for seamless integration and remote monitoring via a dedicated mobile app. With a broad operating temperature range of -40°C to 80°C and versatile process connections like G threads or optional flanges, the SK-R800WE provides a reliable solution for complex level sensing needs.



### Structure



### TECHNICAL FEATURES

<b>Operating Frequency</b>	77GHz - 81GHz
<b>Measurement Range</b>	30 M
<b>Measurement Accuracy</b>	$\pm 2$ mm (for liquids)
<b>Beam Angle</b>	$\pm 3.5^\circ$
<b>Material</b>	Stainless Steel
<b>Process Connection</b>	Thread or Optional flange DN and ANSI (customized)
<b>Process Temperature</b>	-40°C to 80°C
<b>Process Pressure</b>	Normal atmospheric pressure
<b>Signal output</b>	4-20mA / RS485/ Bluetooth / HART
<b>Protection Class</b>	Two-wire DC 24V (22V~30V)
<b>Power supply</b>	IP68
<b>Dimensions</b>	74mm x 97mm
<b>Weight</b>	1,5 Kg (depends on the connection type)
<b>Communication</b>	Bluetooth APP

# Radar Level Transmitter

## RM-R800WE

**REINMEER**

Data sheet Model RM-R800WE

RM-R800E /  -  -  -  -  -  -

①
②
③
④
⑤
⑥
⑦

### ① Measured Product

Water / Liquids	<input checked="" type="checkbox"/>	<b>WS</b>
-----------------	-------------------------------------	-----------

### ② Measurement Range

10 m	<input checked="" type="checkbox"/>	<b>10</b>
20 m	<input type="checkbox"/>	<b>20</b>
30 m	<input type="checkbox"/>	<b>30</b>

### ③ Process Connection

G " Thread	<input checked="" type="checkbox"/>	<b>G</b>
Flange	<input type="checkbox"/>	<b>F</b>

### ④ Process temperature

-40...+80°C	<input checked="" type="checkbox"/>	<b>N</b>
-------------	-------------------------------------	----------

### ⑤ Cable Entry

M12 x1.5 (F)	<input checked="" type="checkbox"/>	<b>M</b>
--------------	-------------------------------------	----------

### ⑥ Electronic

Two-wire 4...20mA	<input checked="" type="checkbox"/>	<b>T</b>
MODBUS	<input type="checkbox"/>	<b>M</b>
Wireless Bluetooth	<input type="checkbox"/>	<b>B</b>

### ⑦ Protection

IP 68	<input checked="" type="checkbox"/>	<b>P</b>
-------	-------------------------------------	----------

# Contact us

---

## **Address :**

Reinmeer Office Address  
Eutiner Str.12,22143  
Hamburg, Germany  
[reinmeer@reinmeer.com](mailto:reinmeer@reinmeer.com)